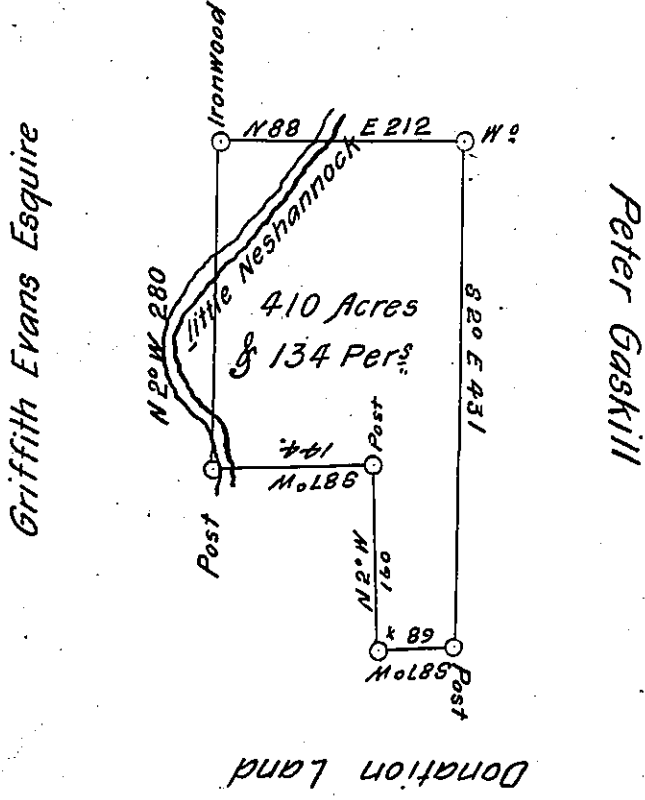


Thomas Swearingen



The above is a Draught of a Survey made the 13th day of May 1795
 In Pursuance of a Warrant granted George Evans dated the 14th day of
 Aprile 1792 Situated on the Neshannock branch of Beaver Creek
 Allegnany County Called Bear Tree Containing 410 Acres & 134 Perches
 & Allowance of Six Per cent &c.

Thomas Stokely D. S.

Daniel Brodhead Esq.
 Surveyor Genl of Pennsylvania

IN TESTIMONY that the above is a copy of the original remaining on file in
 the Department of Internal Affairs of Pennsylvania, made
 conformably to an Act of Assembly approved the 16th day of
 February, 1833, I have hereunto set my Hand and caused
 the Seal of said Department to be affixed at Harrisburg,
 this twenty first day of July 1904

Lucas R. D...
 Secretary of Internal Affairs.